

## Tutorial problems and questions

1. Consider the relevant portion of Pb-Sn phase diagram shown in Fig. 8. Calculate the amount of pro-eutectic phase for an alloy of composition 70% Sn.

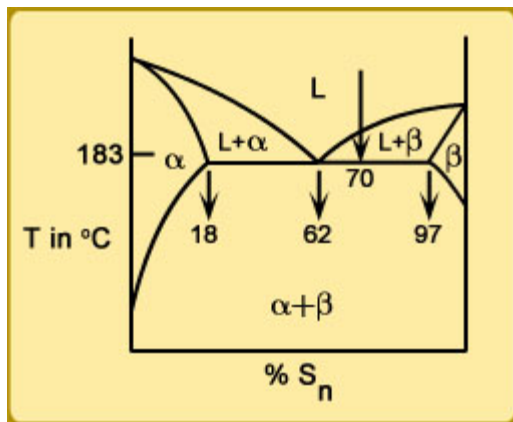


Figure 8: Pb-Sn phase diagram with equilibrium values for the eutectic line and point.

### Answer

Using the lever rule and substituting the information from the phase diagram, the amount of pro-eutectic  $\beta$  will be  $\frac{70-62}{97-62} = 0.228$ .