

Unit 4 - Week 2

Course outline

How does an NPTEL online course work?

Practice Assignment

Week 1

Week 2

- Lecture 4.1: Study Traffic Congestion using CLD-I
- Lecture 4.2: Study Traffic Congestion using CLD-II
- Lecture 5.1: Stock & Flow Diagram Brief History
- Lecture 5.2: Stock & Flow Diagram: Basics-I
- Lecture 5.3: Stock & Flow Diagram: Basics-II
- Lecture 6.1: Stock & Flow Diagram: Basics-III
- Lecture 6.2: Graphical Integration
- Lecture 6.3: Patterns of Behaviour: Types
- Quiz : Assignment 02**
- Study Material for Week 2
- Download Videos
- Weekly Feedback
- Assignment 02- Detailed solution

Week 3

Week 4

Week 5

Week 6

Week 7

Week 8

Text Transcripts

Assignment 02

The due date for submitting this assignment has passed. **Due on 2020-02-12, 23:59 IST.**
As per our records you have not submitted this assignment.

1) Identify all the stock variables from the given list 1 point

- Book value of inventory
- Promotion of Associate Professors to Professors at IIT
- Production Delay
- Assigning homeworks in a course
- Lifetime of product
- Forecast of demand

No, the answer is incorrect.
Score: 0
Accepted Answers:
Book value of inventory
Forecast of demand

2) Identify all the rates or flow variables from the given list 1 point

- Book value of inventory
- Promotion of Associate Professors to Professors at IIT
- Production Delay
- Assigning homeworks in a course
- Lifetime of product
- Forecast of demand
- Room temperature

No, the answer is incorrect.
Score: 0
Accepted Answers:
Promotion of Associate Professors to Professors at IIT
Assigning homeworks in a course

3) Select the statements that are true about the role of stocks 1 point

- Stocks characterize the state of the system
- Stocks provide inertia and memory
- Stocks are not sources of delays
- Stock values are always positive

No, the answer is incorrect.
Score: 0
Accepted Answers:
Stocks characterize the state of the system
Stocks provide inertia and memory

4) Which of the following NOT a basic pattern of behaviour? 1 point

- Exponential Growth behavior
- Goal Seeking behavior
- Oscillations
- S-shaped growth

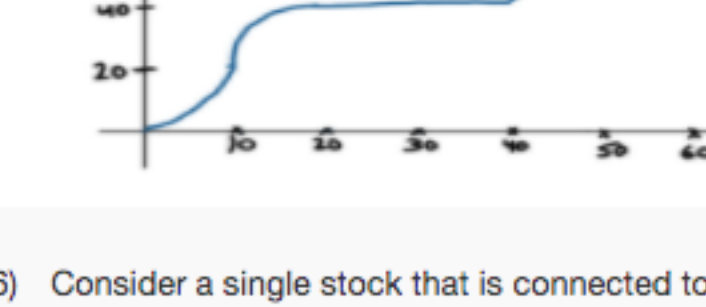
No, the answer is incorrect.
Score: 0
Accepted Answers:
S-shaped growth

5) Consider a single stock that is connected to a single inflow rate. Suppose the inflow is as shown in the graph below. Initial value of stock is 0. Which 2 points of the following captures the correct behaviour of the stock?

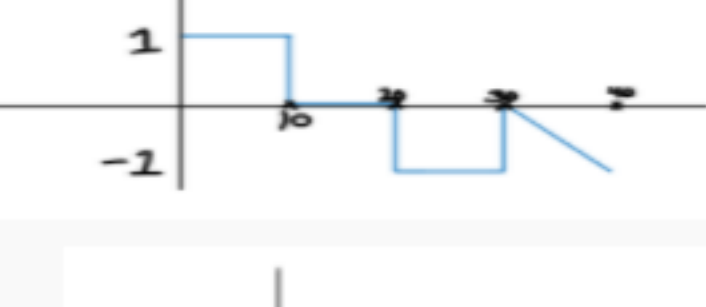


-
-
-
-

No, the answer is incorrect.
Score: 0
Accepted Answers:

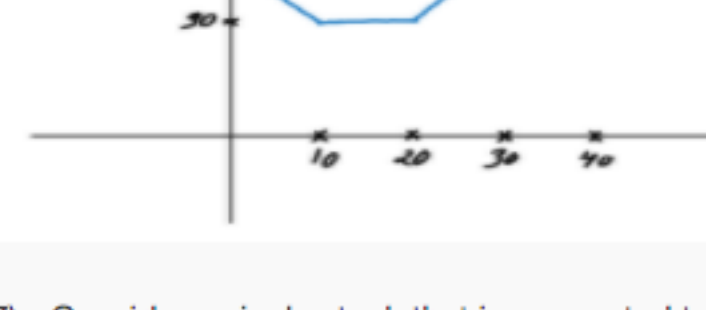


6) Consider a single stock that is connected to a single outflow rate. Suppose the outflow and is as shown in the graph below. Initial value of stock is 100. Which of the following captures the correct behaviour of the stock? 2 points

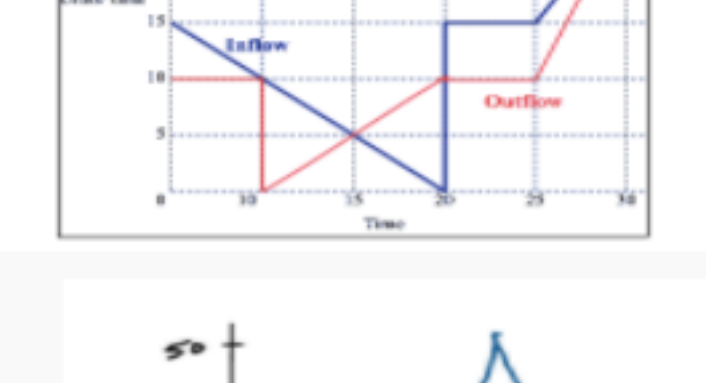


-
-
-
-

No, the answer is incorrect.
Score: 0
Accepted Answers:

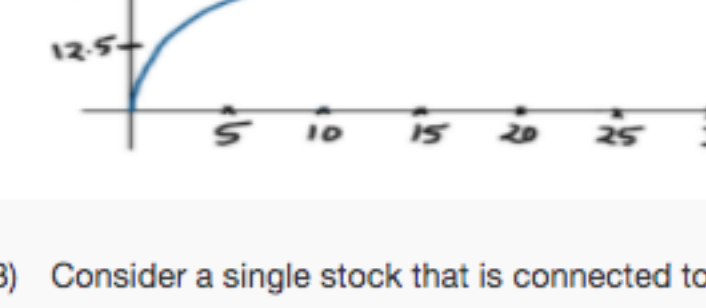


7) Consider a single stock that is connected to an inflow rate and an outflow rate. Suppose the inflow and outflow are as shown in the graph below. Initial value of stock is 0. Which of the following captures the correct behaviour of the stock? 2 points



-
-
-
-

No, the answer is incorrect.
Score: 0
Accepted Answers:



8) Consider a single stock that is connected to an inflow rate and an outflow rate. Suppose the stock behaviour is as shown in the graph below. Which 2 points of the following captures the correct behaviour of the net flow rate? 2 points



-
-
-
-

No, the answer is incorrect.
Score: 0
Accepted Answers:

