

Module 1 : Introduction : Review of Basic Concepts in Mechanics

Lecture 6 : Tutorial Problems

Objectives

In this course you will learn the following

- Some tutorial problems related to this module.

TUTORIAL PROBLEMS

T1.1 Find the degree of static indeterminacy in the following truss. What are the degree of internal and external indeterminacy?

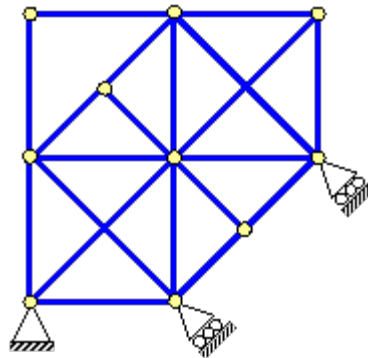


Figure T1.1

T1.2 Find the degree of static indeterminacy in the following truss. What are the degree of internal and external indeterminacy?

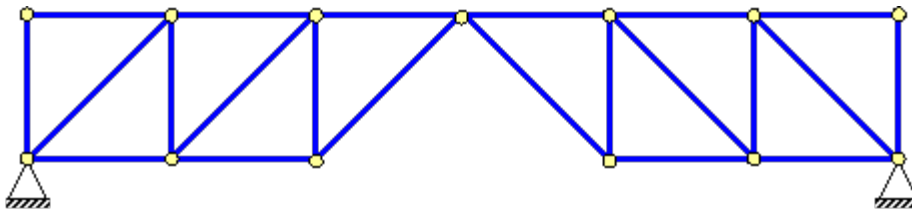


Figure T1.2

T1.3 What is the bending moment at the base of the column *CD* in Figure T1.3? (Hint: Consider symmetry/antisymmetry)

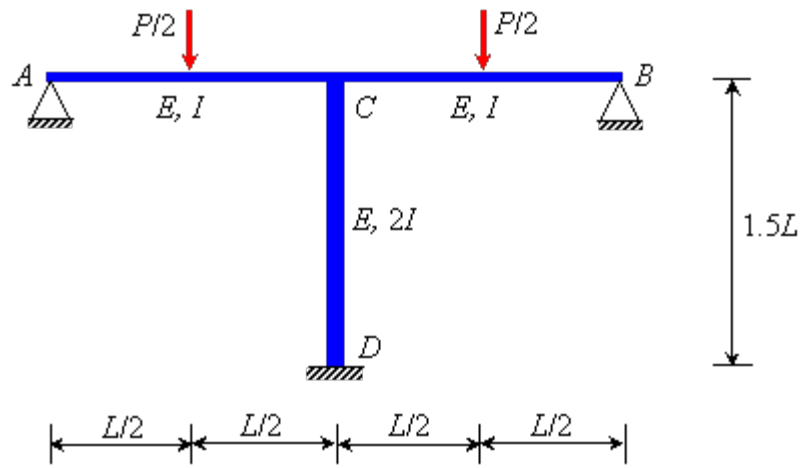


Figure T1.3

Recap

In this course you have learnt the following

- You have learned some tutorial problems related to this module.

Answers of tutorial problems

T1.1 Total = 3,
Internal = 2,
External = 1.

T1.2 Total = 0,
Internal = - 1,
External = 1.

T1.3 Ans: 0